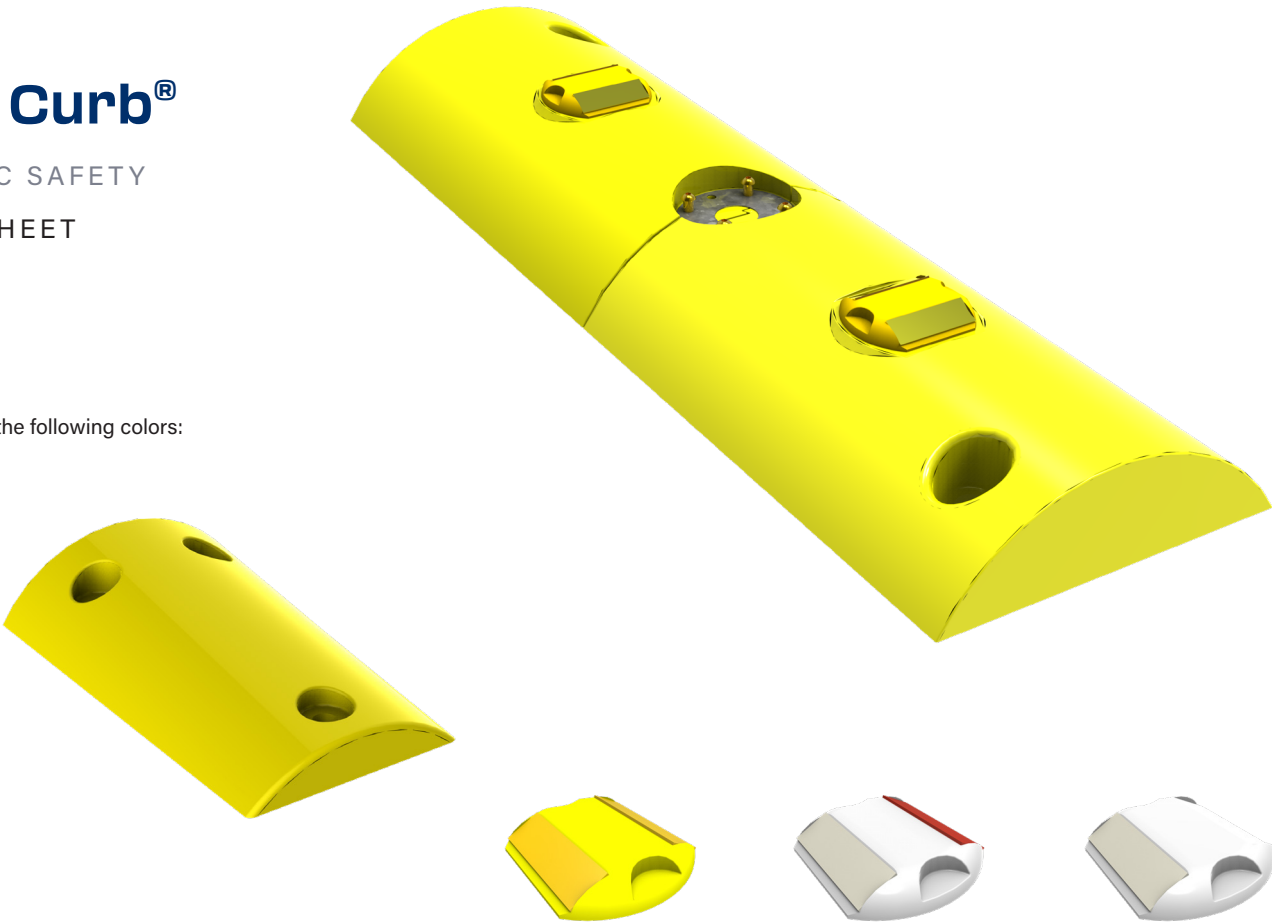




# Tuff Curb®

TRAFFIC SAFETY  
SPEC SHEET  
P/N TC

Available in the following colors:



## Product Specifications

Socket Type	Fixed or Quick Release
Material	Injection-molded polyethylene
Dimensions	40" x 12" x 3.5"; 12 lbs.
Hardware	Fixed - stainless steel socket cap, screws and Ultra Sta-Coat T-Nuts; Quick Release - zinc chromate shoulder bolts
Curb Color	White, Yellow (integral colorization)
Reflectors	Raised pavement markers match color of curb
Reflective Sheet Color	Yellow/yellow, white/red, white/blank
Installation	Two anchors (included)
Compatibility	Fixed, Quick Release uprights

## Recommended Uses

Ideal for use curves, medians, edge lines, work zones, rail crossings, toll booths  
Use with Impact Recovery posts or signs attached



Tel: (626) 257-8328 | [sales@sharp-line-solutions.com](mailto:sales@sharp-line-solutions.com)  
[www.sharp-line-solutions.com](http://www.sharp-line-solutions.com)

