



# FILLABLE SIGN BASES



RubberForm's Fillable Sign Base with wheels is a new economical sign base designed for a more basic solution in portable/movable sign bases. Modeled after our renowned original Rubber Sign Base, it uses the same reliable design technology that made RubberForm the desired standard for portable sign bases. We also kept the same attractive look that cannot be found anywhere else and utilized a recessed wheel design that beautifully blends in with the bottom of the sign base. The sign base is available in 6 stock colors and any custom color by request.

Rotational molded with our recycled, durable plastic formula gives it a hard plastic exterior that makes it the most durable fillable sign base on the market. The base utilizes a low center of gravity that helps keep your sign standing in extreme weather. It can be filled with water (for areas that freeze, a gel is added), sand, or even gravel for the weight needed to stay in place.

The RubberForm Fillable Sign Base can be used wherever semi-permanent signage is needed. Our wheeled sign base design allows you to move the base with little effort; simply tip it, and roll, pull, or push it to its new location. It is the ideal choice for sidewalk signs and all parking lot safety needs.

## Key Features

- Easy to move – just tip and roll, pull, or push to destination on provided wheels
- Fill with water, sand, or gravel for maximum stability
- Hard Durable Plastic – will not chip, crack, or crumble
- Supports our plastic signposts with yellow cap
- Maintenance free
- Innovated, designed, and made by RubberForm in the United States



Made in the USA



100% Recycled Material



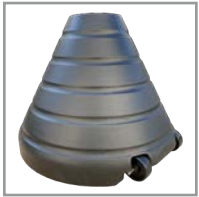
Increase LEED Score





# FILLABLE SIGN BASE SPECIFICATIONS

## Models



**RF-SBRFB-BLK**



**RF-SBRFB-YLW**



**RF-SBRFB-BLU**



**RF-SBRFB-GRN**



**RF-SBRFB-RED**



**RF-SBRFB-TCR**

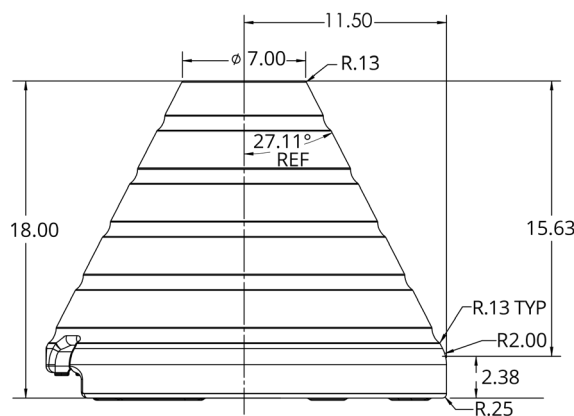
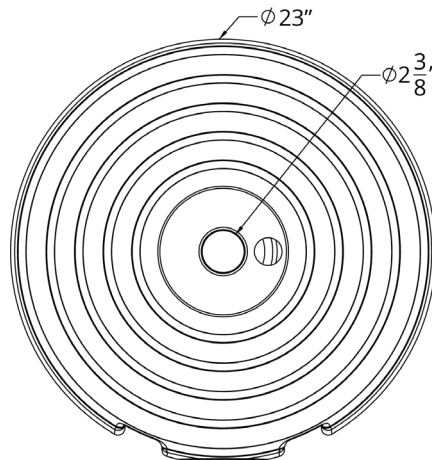


**RF-SBRFB-CUS**



**RF-PPRD4/5/6**

- Round plastic sign post with safety yellow cap
- 4, 5, and 6 foot posts available



## Specifications

- 23" Diameter
- 18" Height, Conical shape
- Sign Base Color Options:
  - Repro Black
  - Safety Yellow
  - Handicap Blue
  - Emergency Red
  - Terra Cotta Red
  - Eco-Green
  - Custom Color
- Supports our 2-3/8" round 4-foot, 5-foot, and 6-foot plastic signposts with safety yellow cap

## Hardware Kit

### RF-SMHWK-RD

- Round Post Sign Mounting Hardware
- 2 bolts
- 4 washers
- Includes 2 fender washers for back of sign & 2 nyloc nuts



[www.sharpline-solutions.com](http://www.sharpline-solutions.com)



(626) 257-8328



[sales@sharpline-solutions.com](mailto:sales@sharpline-solutions.com)